

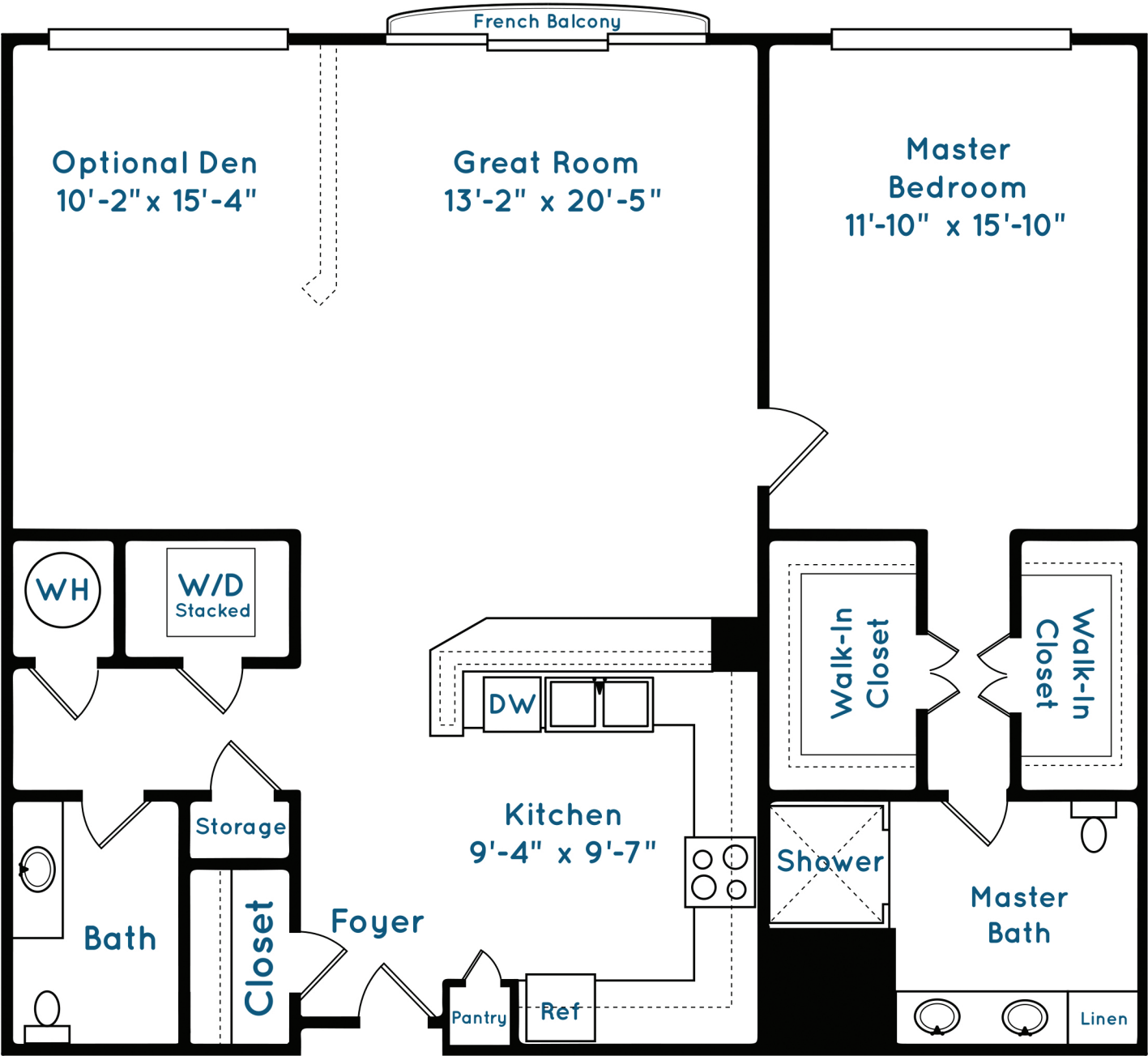
Somerset

One bedroom apartment

with optional den

1,095 square feet

One & one half baths



Square footage, room dimensions, window placement, or bathroom tub/shower configuration may vary. Floor plan representation is typical.

Inclusive

- Multiple dining venues and flexible options.
- Weekly housekeeping.
- Maintenance of all residences, major appliances, common and amenity areas.
- Landscaping & full grounds maintenance.
- All utilities, including wi-fi (except telephone & premium cable television).
- Resident portal.
- In-house informational television channel service.
- Activity programs including cultural and educational programs, social events, recreational and non-denominational religious opportunities.
- Scheduled transportation.
- Resident business office (copier, fax, computer).
- Emergency call system.
- 24-hour monitored security systems.
- Property and building insurance (except personal property).
- Unlimited short- and long-term assisted living and skilled nursing.
- Unlimited memory care.
- Lifetime membership in Galloway Ridge's Duke Center for Living Health and Fitness Center.

Additional Service Options

(available at an additional charge)

- Galloway Ridge in-home care
- Pharmacy delivery
- Catering service
- Guest meals
- Dry cleaning pick-up and delivery
- Covered parking
- Guest suites
- Newspaper delivery
- Duke University Health System Primary Care Clinic

Life Care Monthly Service Fees

One Resident	Two Residents*
\$ _____	\$ _____

*Price includes the second person fee of \$ _____

Entrance Fee Options

Traditional Amortized: *Plan A*

Entrance Fee	Entrance Fee
One Resident	Two Residents*
\$ _____	\$ _____

*Price includes the second person fee of \$ _____

75% Refundable: *Plan B*

Entrance Fee	Entrance Fee
One Resident	Two Residents*
\$ _____	\$ _____

*Price includes the second person fee of \$ _____

Sales Counselor _____

Date _____